

AKWA+FLEX-50

MONO COLOR SPECIFICATION SHEET

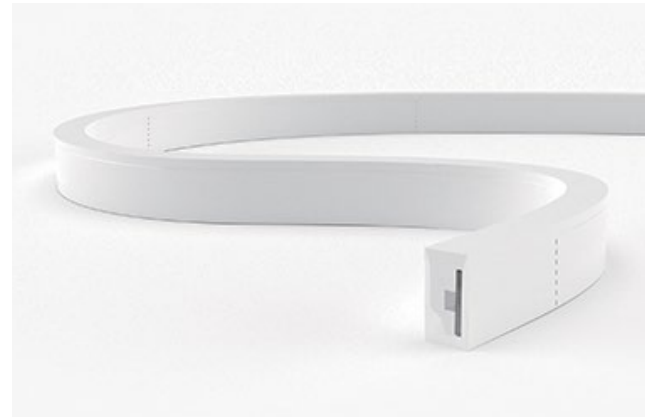
Project Name:

Specifier:

Location:

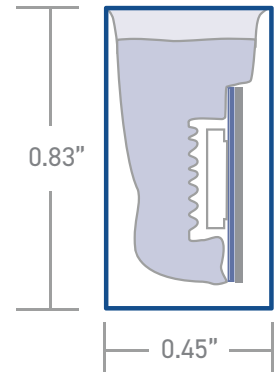
Product Code:

- Material:**
Silicone
- Impact Rating:**
IK08
- Weatherproof Rating:**
IP68
Wet Location
- Operating Temp:**
-40°F - 131°F
- Bending Direction:**
Horizontal
- UL Listed**
- Beam Angle:**
120°
- Dimmable:**
0-10V, DMX
- Bend Diameter:**
>3.14"
- CRI:**
>80+, >90+



	AKWA Silicone Resin Encapsulation Horizontal Bend
Input Voltage	24V
Power Consumption	4.0W/ft
Standard CRI	>80
LEDs per foot/m	22 72
Incremental length in/mm	1.09" 27.7mm

Color Temperature [K]	Lumen Output [lm/ft]
2700K	98lm
3000K	98lm
3500K	104lm
4000K	104lm



Luminaire Options	RGB/W, tunable white & dim to warm available - refer to specific datasheets
Control	0-10V · DMX
Optics	opal symmetrical 120° diffuser
Finish	white
Mounting	surface · wall
Accessories	mounting channel / profile

Due to tolerances of the production process and the electrical components, values for light output, color temperature and electrical power can vary up to 10%.

How to specify KLIK USA AKWA Flex 50. Example of specification: AF5030K80XX.XBBADIM

Fixture Type	Color Temp [K]	CRI	Nominal Length [feet] with one feed ^{1,2}	Power Entry Location ³	Nominal Power Entry Termination	Mounting Profiles & Brackets	Accessories	Control
AF50	27K 2700K 30K 3000K 35K 3500K 40K 4000K A Amber [590nm] R Red G Green B Blue	80 CRI >80+ 90 CRI >90+	XX.X Specify run Length [ft]	B Back one end B2 Back each end E End Plate one end E2 End Plate each end SL Side - Left SR Side - Right SLR Side - Left+Right	B Bare cable with anti-wick ferrule [Std] M Male IP68 Connector F Female IP68 Connector	A AF50S01 B AF50S04 C AF50H05 D AF50V01 E AFPC50S01-T F AFSSC50FLX G AFSSC50S01-05 H AFSSC50S02-100 I AF50S01FLX J AF50S04FLX	- Profile [Std] A AF50ADJ	DIM 0-10V Dim [Std] DMX1 DMX 1 Ch

1. Specify length of run
2. Max run length per power entry feed is 21' [6.4m] and 42' [12.8m] for 2 x feeds [one at each end]
3. B2, E2 & SLR only required if exceeding the maximum single power entry as indicated above, thus requiring TWO power entries.

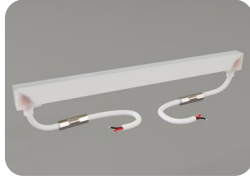
AKWA+FLEX-50

POWER ENTRY LOCATIONS



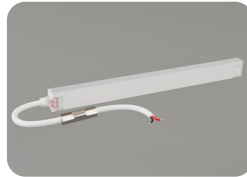
B

Power entry from the BACK of the fixture [one end]



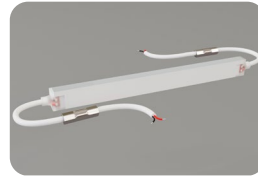
B2

Power entry from the BACK of the fixture [both ends] [for fixture length >21']



E

Power entry from the END of the fixture [one end]



E2

Power entry from the END of the fixture [both ends] [for fixture length >21']



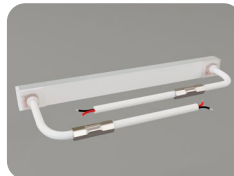
SL

Power entry from the SIDE of the fixture [LHS]



SR

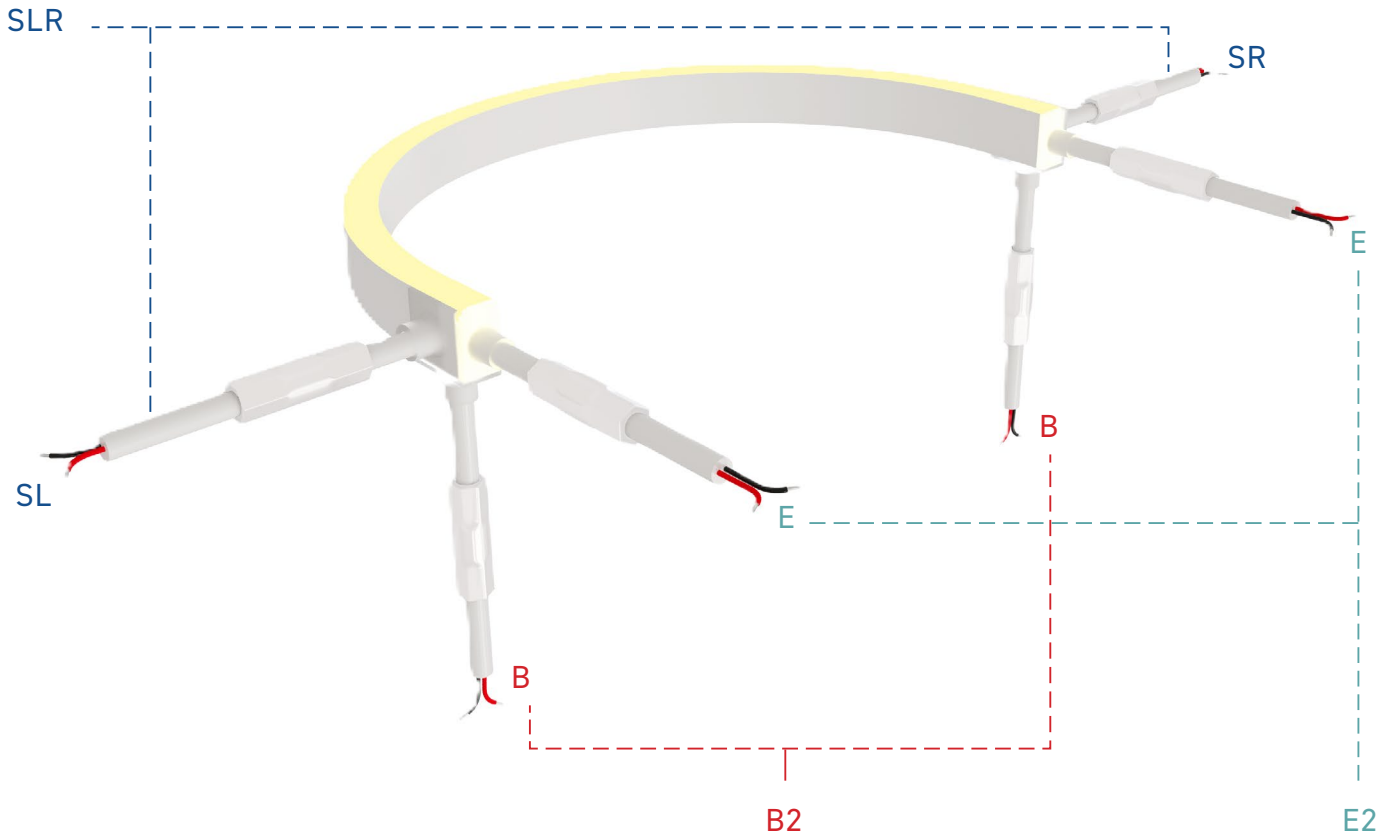
Power entry from the SIDE of the fixture [RHS]



SLR

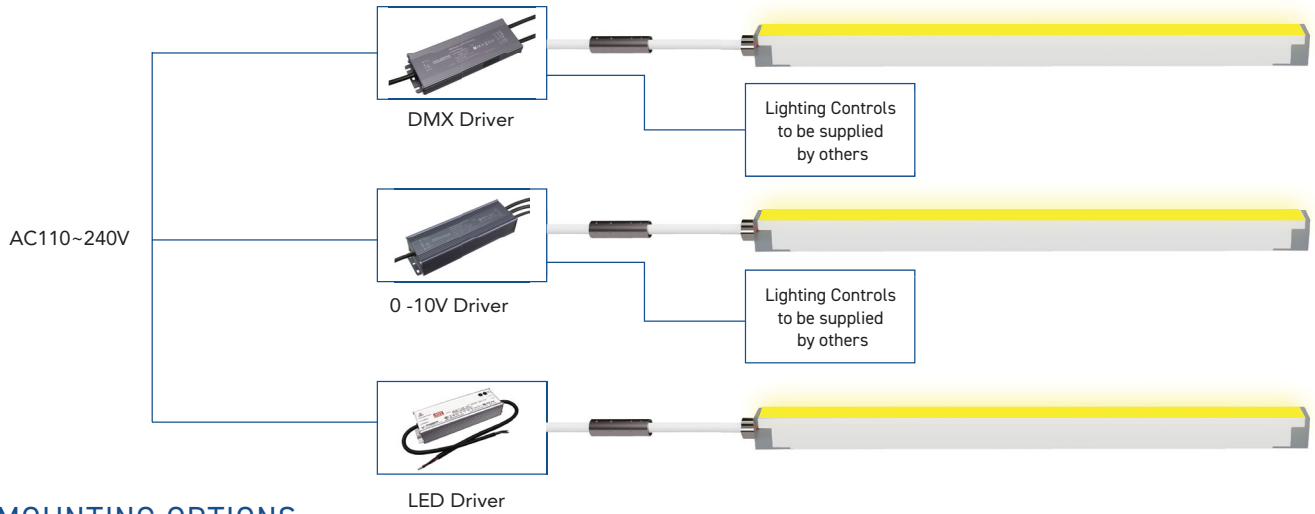
Power entry from the SIDE of the fixture [both L&R] [for fixture length >21']

POWER ENTRY ORIENTATION



AKWA+FLEX-50 WIRING DIAGRAMS

MONO COLOR



MOUNTING OPTIONS

A - AF50S01

B - AF50S04

C - AF50H05

D - AF50V01

E - AFPC50S01-T

F - AFSSC50FLX

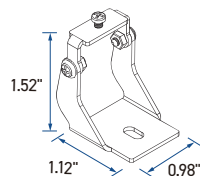
G - AFSSC50S01-05

H - AFSSC50S02-100

I - AF50S01FLX

J - AF50S04FLX

ACCESSORIES



Adjustable Bracket - A - AF50ADJ