

AKWA+FLEX-30

SPECIFICATION SHEET

Project Name:

Specifier:

Location:

Product Code:


Material:
 Silicon

Impact Rating:
 IK08

Weatherproof Rating:
 IP68
 Wet Location

Operating Temp:
 -40°F - 131°F

Bending Direction:
 Horizontal

UL Listed

Beam Angle:
 120°

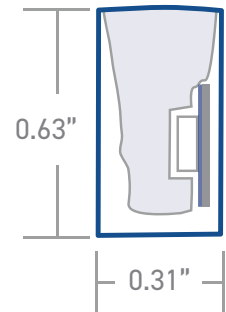
Dimmable:
 0-10V, DMX, Triac

Bend Radius:
 >3.15"

CRI:
 >80+


DIRECT	AKWA Silicone Resin Encapsulation Horizontal Bend
Input Voltage	24V
Power Consumption	3.05W/ft
Standard CRI	>80
LEDs per foot/m	37 120
Incremental length in/mm	3.93" 100mm

Color Temperature [K]	Lumen Output [lm/ft]
2700K	61lm
3000K	61lm
3500K	67lm
4000K	67lm



Other LED Options	static colors, RGB
Control	0-10V · DMX
Optics	opal symmetrical 120° diffuser
Finish	white
Mounting	surface · wall
Accessories	mounting channel / profile

Due to tolerances of the production process and the electrical components, values for light output, color temperature and electrical power can vary up to 10%.

How to specify KLIK USA AKWA Flex 30. [Example of specification: AF3030KS XX.X BCA0](#)

Fixture Type	Color Temp [K]	Mounting	Nominal Length [feet] with one feed ^{1,2}	Power Entry Location ³	Nominal Power Entry Termination	Mounting Profiles & Brackets	Control
AF30	27K 2700K 30K 3000K 35K 3500K 40K 4000K R Red G Green B Blue RGB RGB A Amber [590nm]	S Surface W Wall-mount	XX.X Specify run Length [ft]	B Back one end B2 Back each end EP End Plate one end EP2 End Plate each end S Side S2 Side each end	- Bare cable anti-wick device [Std] M Male IP68 Connector F Female IP68 Connector	A AF30S01 B AF30S02	- 0-10V Dim [Std] DMX1 DMX 1 Ch DMX4 DMX RGB

1. Specify length of run

2. Max run length per power entry feed is 32.8' [10m], 65.61' [20m] for 2 x feeds [one at each end]

3. B2, EP2 & S2 only required if exceeding the maximum single power entry feed as indicated above

AKWA+**+**FLEX-30

POWER ENTRY LOCATIONS



Power Entry - End



Power Entry - Side

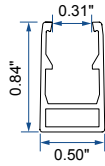


Power Entry - Back

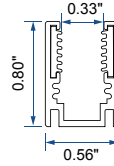
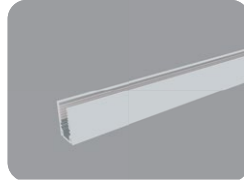


End Plate

MOUNTING OPTIONS



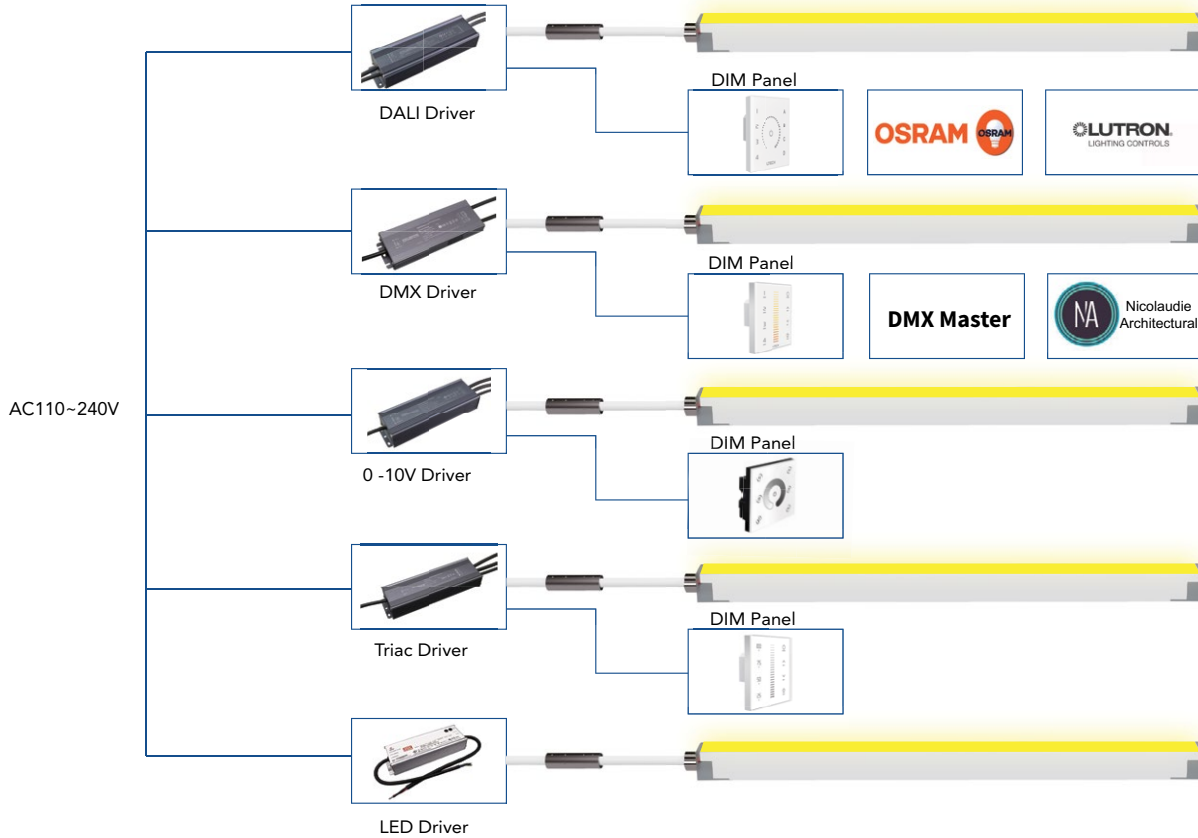
A - AF30S01



B - AF30S02

AKWA+FLEX-30 WIRING DIAGRAMS

MONO COLOR



RGB

