

# AKWA+FLEX-50

## SPECIFICATION SHEET

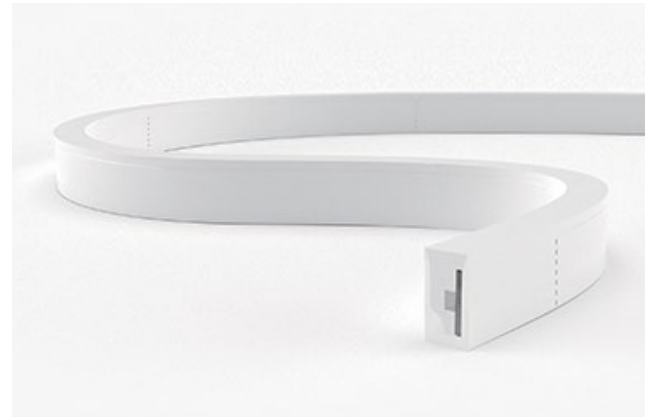
Project Name: .....

Specifier: .....

Location: .....

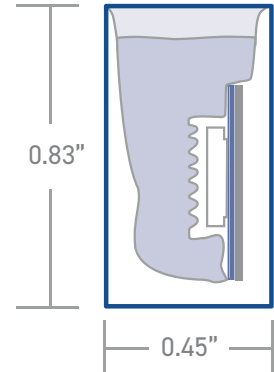
Product Code: .....

- Material:**  
Silicon
- Weatherproof Rating:**  
IP68  
Wet Location
- Bending Direction:**  
Horizontal
- Beam Angle:**  
120°
- Bend Radius:**  
>3.14"
- Impact Rating:**  
IK08
- Operating Temp:**  
-40°F - 131°F
- UL Listed**
- Dimmable:**  
0-10V, DMX, Triac
- CRI:**  
>80+



<b>DIRECT</b>	AKWA Silicone Resin Encapsulation   Horizontal Bend
Input Voltage	24V
Power Consumption	4.0W/ft
Standard CRI	>80
LEDs per foot/m	22   72
Incremental length in/mm	1.09"   27.7mm

<b>Color Temperature [K]</b>	<b>Lumen Output [lm/ft]</b>
2700K	98lm
3000K	98lm
3500K	104lm
4000K	104lm



<b>Other LED Options</b>	static colors, RGB, RGB/W, tunable white, dim to warm.
Control	0-10V · DMX
Optics	opal symmetrical 120° diffuser
Finish	white
Mounting	surface · wall
Accessories	mounting channel / profile

Due to tolerances of the production process and the electrical components, values for light output, color temperature and electrical power can vary up to 10%.

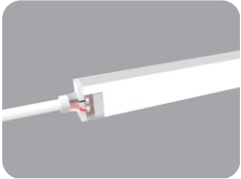
### How to specify KLIK USA AKWA Flex 50. Example of specification: AF5030KS XX.X BCA

Fixture Type	Color Temp [K]	Mounting	Nominal Length [feet] with one feed <sup>1,2</sup>	Power Entry Location <sup>3</sup>	Nominal Power Entry Termination	Mounting Profiles & Brackets	Control
AF50	<b>27K</b> 2700K <b>30K</b> 3000K <b>35K</b> 3500K <b>40K</b> 4000K <b>R</b> Red <b>G</b> Green <b>B</b> Blue <b>DTW</b> 1800-3000K <b>RGB3</b> RGBW[3K] <b>RGB4</b> RGBW[4K] <b>TUN</b> 2200-5700K <b>A</b> Amber [590nm]	<b>S</b> Surface <b>W</b> Wall-mount	<b>XX.X</b> Specify run Length [ft]	<b>B</b> Back one end <b>B2</b> Back each end <b>EP</b> End Plate one end <b>EP2</b> End Plate each end <b>S</b> Side <b>S2</b> Side each end	<b>-</b> Bare cable anti-wick device [Std] <b>M</b> Male IP68 Connector <b>F</b> Female IP68 Connector	<b>A</b> AF50S01 <b>B</b> AF50S04 <b>C</b> AF50H05 <b>D</b> AF50V01 <b>E</b> AFPC50S01-T <b>F</b> AFSSC50FLX <b>G</b> AFSSC50S01-05 <b>H</b> AFSSC50S02-100 <b>I</b> AF50S01FLX <b>J</b> AF50S04FLX	<b>-</b> 0-10V Dim [Std] <b>DTW</b> Dim to Warm <b>DMX1</b> DMX 1 Ch <b>DMX4</b> DMX RGBW <b>TUN</b> Tunable White

1. Specify length of run  
 2. Max run length per power entry feed is 32.8' [10m], 65.61' [20m] for 2 x feeds [one at each end]  
 3. B2, EP2 & S2 only required if exceeding the maximum single power entry feed as indicated above

# AKWA+FLEX-50

## POWER ENTRY LOCATIONS



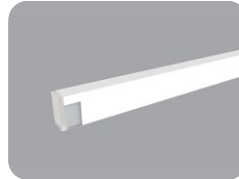
Power Entry - End



Power Entry - Side

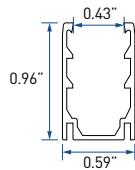


Power Entry - Back

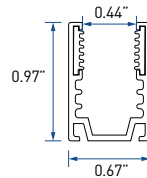
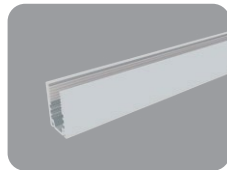


End Plate

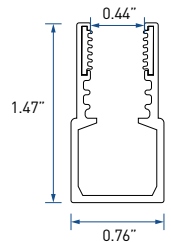
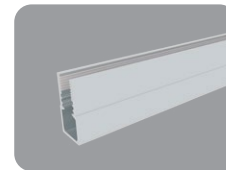
## MOUNTING OPTIONS



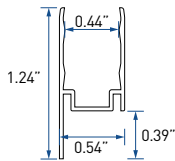
A - AF50S01



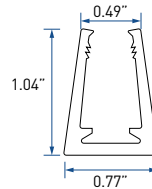
B - AF50S04



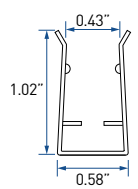
C - AF50H05



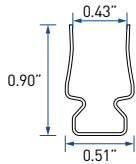
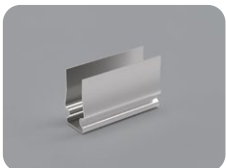
D - AF50V01



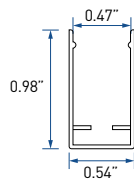
E - AFPC50S01-T



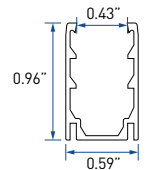
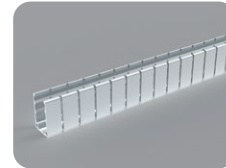
F - AFSSC50FLX



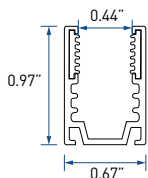
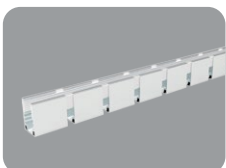
G - AFSSC50S01-05



H - AFSSC50S02-100



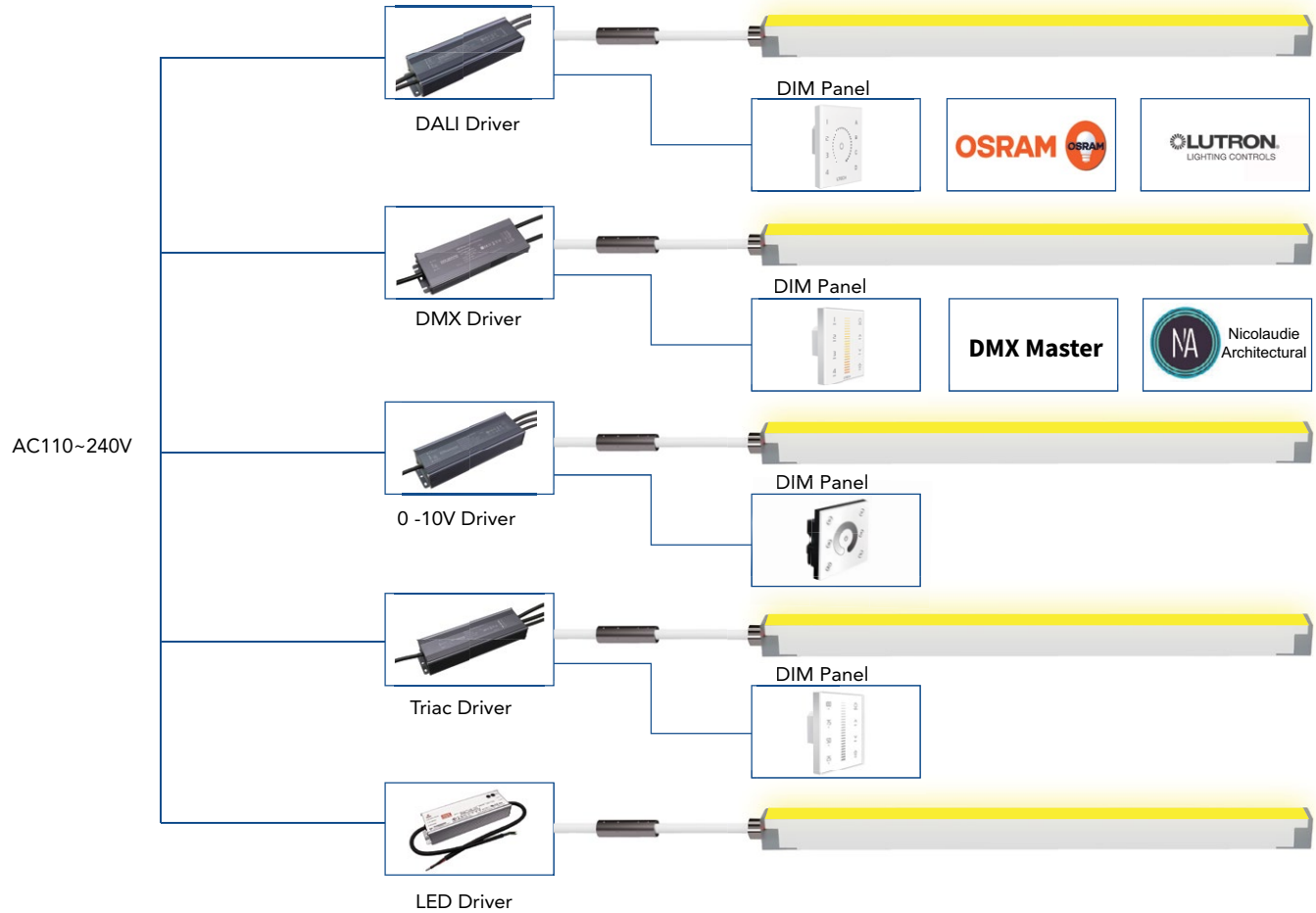
I - AF50S01FLX



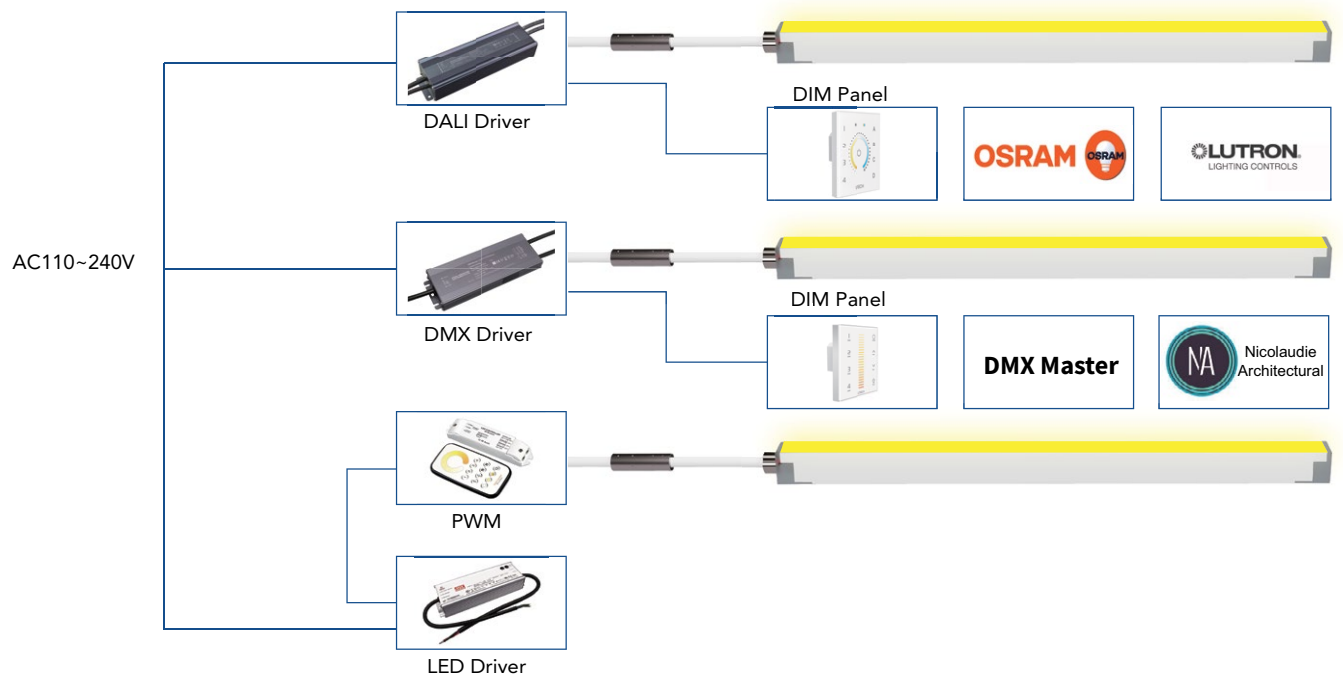
J - AF50S04FLX

# AKWA+FLEX-50 WIRING DIAGRAMS

## MONO COLOR

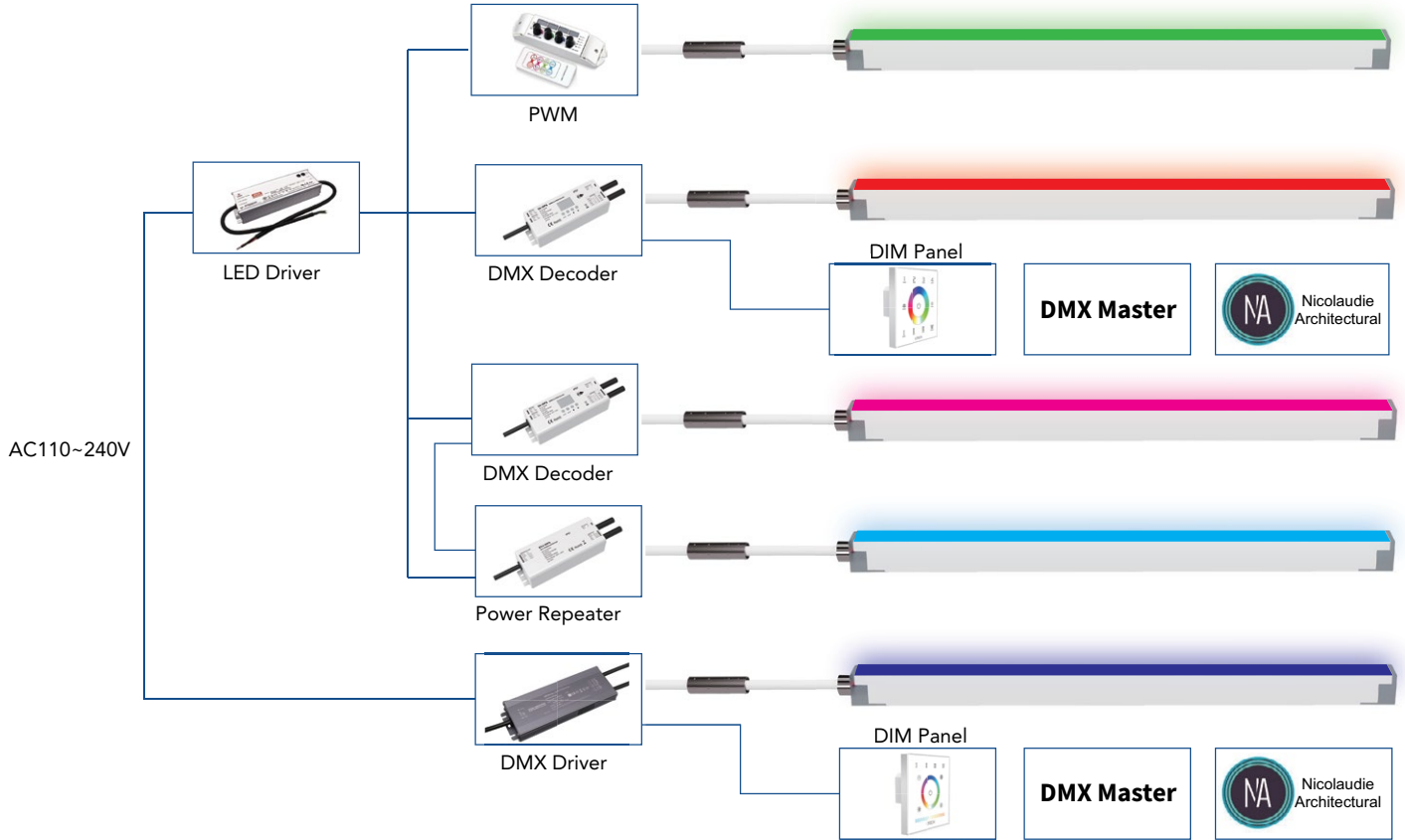


## TUNABLE WHITE



# AKWA+FLEX-50 WIRING DIAGRAMS

## RGBW [3K]



## DMX DYNAMIC

