

AKWA+ FLEX-90











SPECIFICATION SHEET

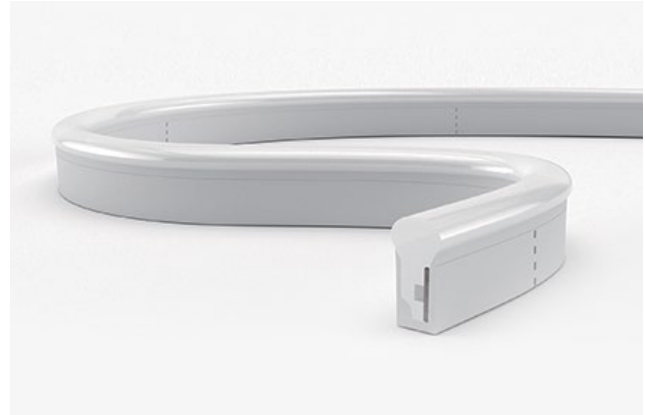
Project Name:

Specifier:

Location:

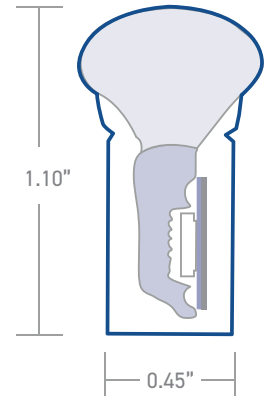
Product Code:

 Material: Silicon	 Impact Rating: IK08
 Weatherproof Rating: IP68 Wet Location	 Operating Temp: -40°F - 131°F
 Bending Direction: Horizontal	 UL Listed
 Beam Angle: 270°	 Dimmable: 0-10V, DMX, Triac
 Bend Radius: >3.15"	 CRI: >80+



DIRECT	AKWA Silicone Resin Encapsulation Horizontal Bend
Input Voltage	24V
Power Consumption	4.6W/ft
Standard CRI	>80
LEDs per foot/m	26 84
Incremental length in/mm	3.27" 83.3mm

Color Temperature [K]	Lumen Output [lm/ft]
2700K	95lm
3000K	95lm
3500K	100lm
4000K	100lm



Other LED Options	static colors, RGB, RGB/W, tunable white.
Control	0-10V · DMX
Optics	opal symmetrical 270° diffuser
Finish	white
Mounting	surface · wall
Accessories	mounting channel / profile

Due to tolerances of the production process and the electrical components, values for light output, color temperature and electrical power can vary up to 10%.

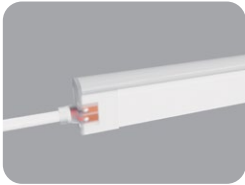
How to specify KLIK USA AKWA Flex 90. Example of specification: AF9030KS XX.X BCA

Fixture Type	Color Temp [K]	Mounting	Nominal Length [feet] with one feed ^{1,2}	Power Entry Location ³	Nominal Power Entry Termination	Mounting Profiles & Brackets	Control
AF90	27K 2700K 30K 3000K 35K 3500K 40K 4000K R Red G Green B Blue DTW 1800-3000K RGB3 RGBW[3K] RGB4 RGBW[4K] TUN 2200-5700K A Amber [590nm]	S Surface W Wall-mount	XX.X Specify run Length [ft]	B Back one end B2 Back each end EP End Plate one end EP2 End Plate each end S Side S2 Side each end	- Bare cable anti-wick device [Std] M Male IP68 Connector F Female IP68 Connector	A AF90S01 B AF90S04 C AF90H05 D AF90V01 E AFPC90S01-T F AFSSC90FLX G AFSSC90S01-05 H AFSSC90S02-100 I AF90S01FLX J AF90S04FLX	- 0-10V Dim [Std] DTW Dim to Warm DMX1 DMX 1 Ch DMX4 DMX RGBW TUN Tunable White

1. Specify length of run
2. Max run length per power entry feed is 26.24' [8m], 52.49' [16m] for 2 x feeds [one at each end]
3. B2, EP2 & S2 only required if exceeding the maximum single power entry feed as indicated above

AKWA+FLEX-90

POWER ENTRY LOCATIONS



Power Entry - End



Power Entry - Side

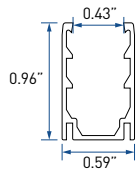


Power Entry - Back

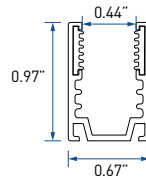
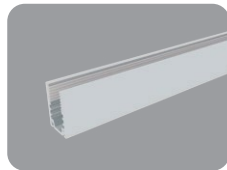


End Plate

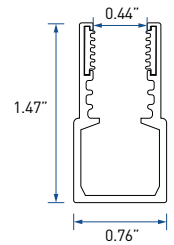
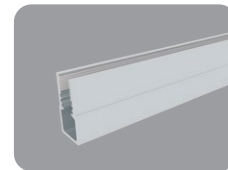
MOUNTING OPTIONS



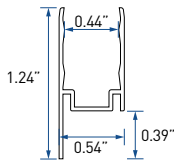
A - AF90S01



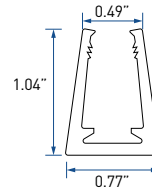
B - AF90S04



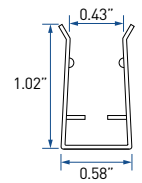
C - AF90H05



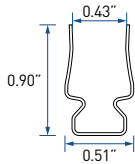
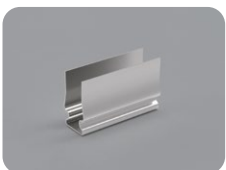
D - AF90V01



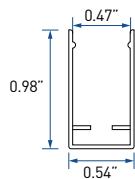
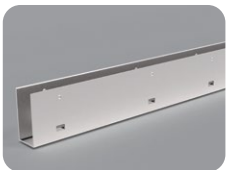
E - AFPC90S01-T



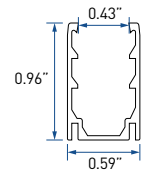
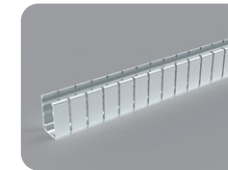
F - AFSSC90FLX



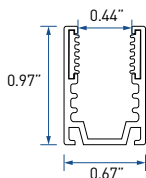
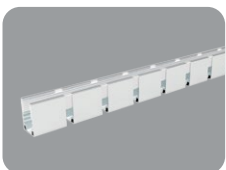
G - AFSSC90S01-05



H - AFSSC90S02-100



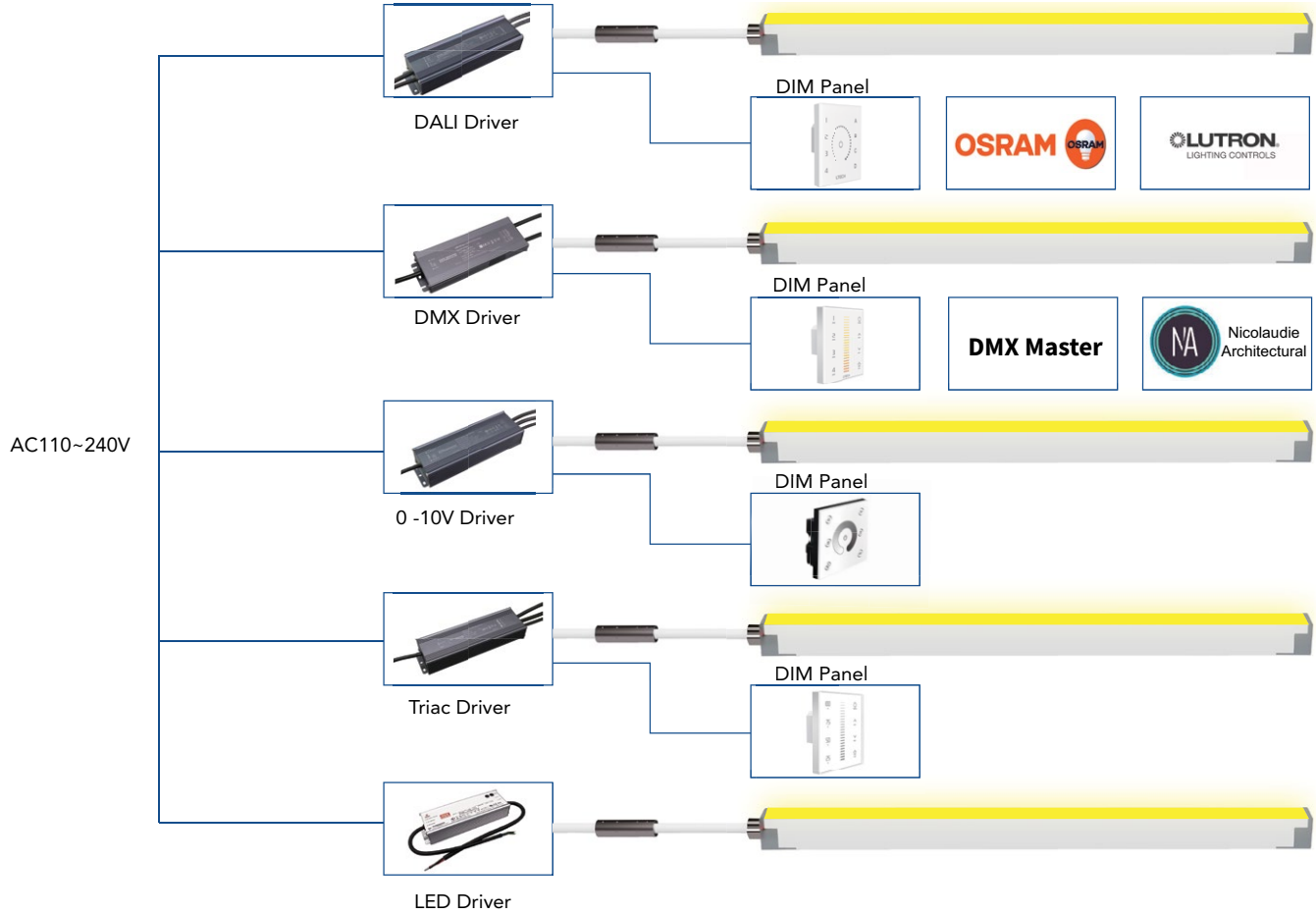
I - AF90S01FLX



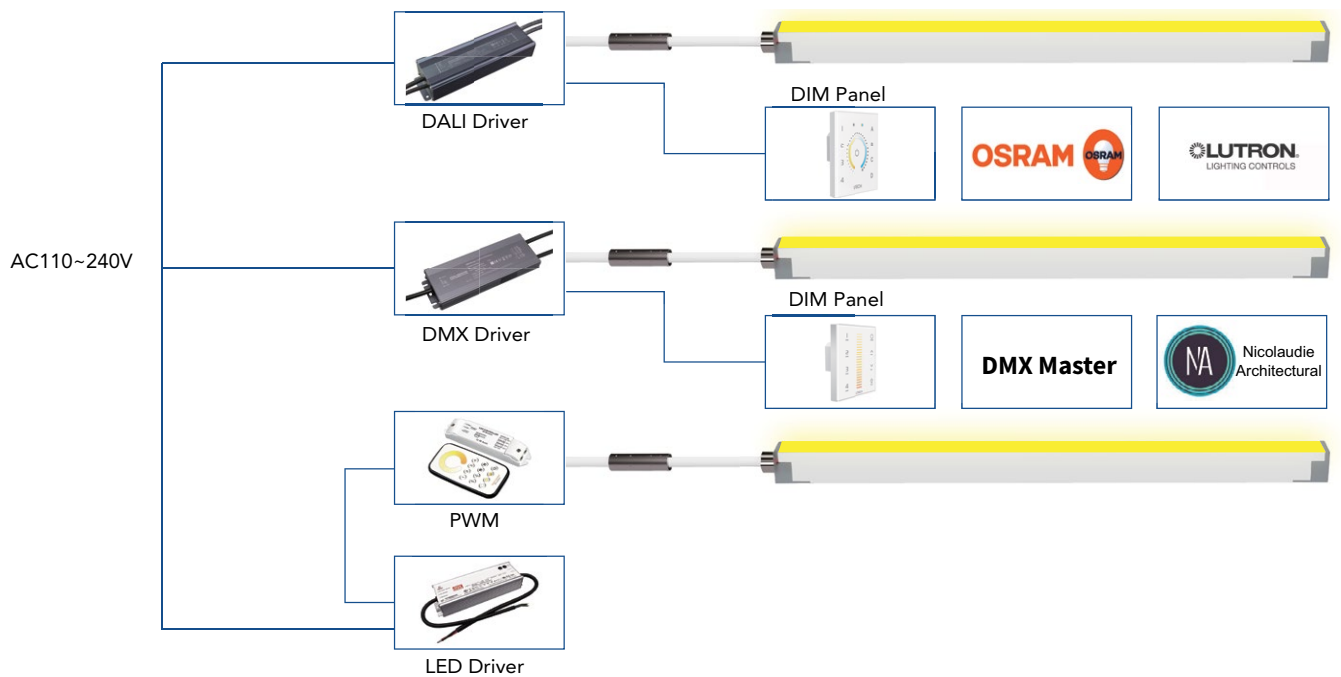
J - AF90S04FLX

AKWA+FLEX-90 WIRING DIAGRAMS

MONO COLOR

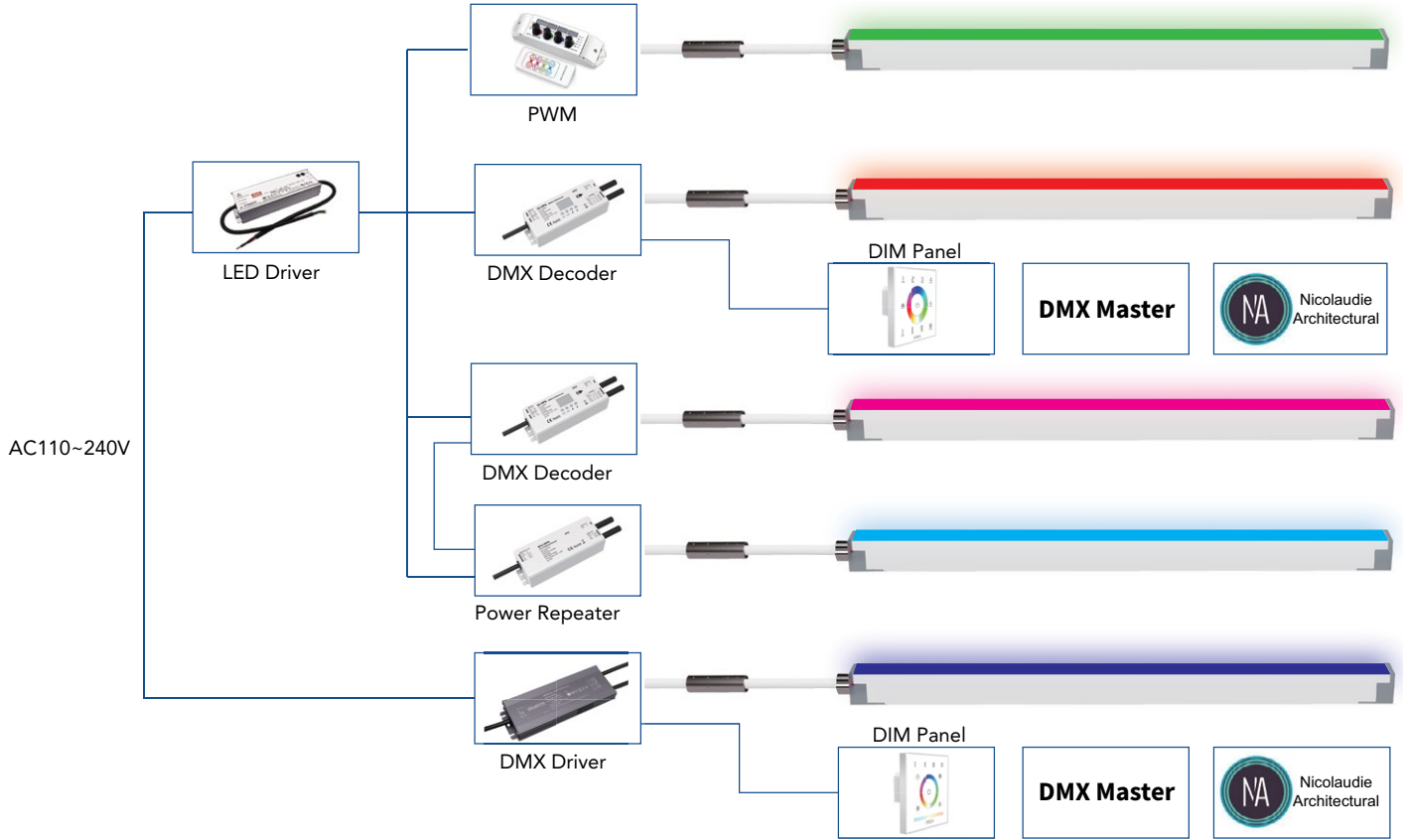


TUNABLE WHITE



AKWA+FLEX-90 WIRING DIAGRAMS

RGBW [3K]



DMX DYNAMIC

