

# AKWAVFLEX-80

## SPECIFICATION SHEET

Project Name: .....

Specifier: .....

Location: .....

Product Code: .....


**Material:**  
 Silicon

**Impact Rating:**  
 IK08

**Weatherproof Rating:**  
 IP68  
 Wet Location

**Operating Temp:**  
 -40°F - 131°F

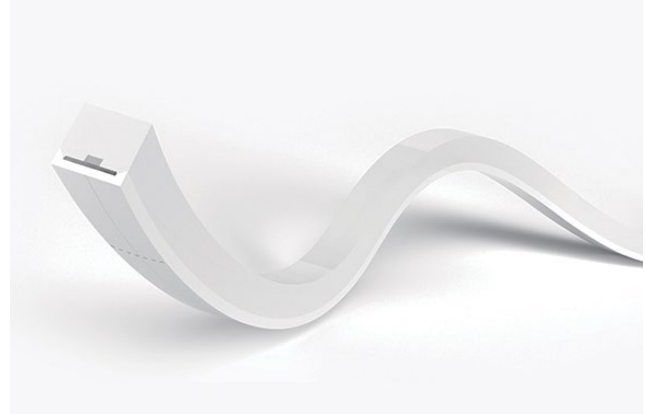
**Bending Direction:**  
 Vertical

**UL Listed**

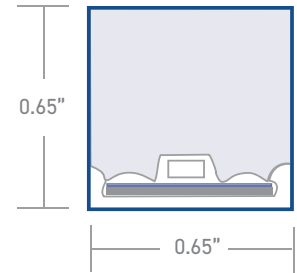
**Beam Angle:**  
 210°

**Dimmable:**  
 0-10V, DMX, Triac

**Bend Radius:**  
 >4.72"

**CRI:**  
 >80+


DIRECT	AKWA Silicone Resin Encapsulation   Vertical Bend
Input Voltage	24V
Power Consumption	4.0W/ft
Standard CRI	>80
LEDs per foot/m	22   72
Incremental length in/mm	1.09"   27.7mm



Color Temperature [K]	Lumen Output [lm/ft]
2700K	210lm
3000K	213lm
3500K	216lm
4000K	222lm

Other LED Options	static colors, RGB/W, tunable white
Control	0-10V · DMX
Optics	opal symmetrical 210° [Emits from 3 sides]
Finish	white
Mounting	surface · wall
Accessories	mounting channel / profile

Due to tolerances of the production process and the electrical components, values for light output, color temperature and electrical power can vary up to 10%.

How to specify KLIK USA AKWA Flex 80. [Example of specification](#): AF8030KS XX.X BCA

Fixture Type	Color Temp [K]	Mounting	Nominal Length [feet] with one feed <sup>1,2</sup>	Power Entry Location <sup>3</sup>	Nominal Power Entry Termination	Mounting Profiles & Brackets	Control
AF80	<b>27K</b> 2700K <b>30K</b> 3000K <b>35K</b> 3500K <b>40K</b> 4000K <b>R</b> Red <b>G</b> Green <b>B</b> Blue <b>RGB3</b> RGBW[3K] <b>RGB4</b> RGBW[4K] <b>TUN</b> 2200-5700K <b>A</b> Amber [590nm]	<b>S</b> Surface <b>W</b> Wall-mount	<b>XX.X</b> Specify run Length [ft]	<b>B</b> Back one end <b>B2</b> Back each end <b>EP</b> End Plate one end <b>EP2</b> End Plate each end <b>S</b> Side <b>S2</b> Side each end <b>L</b> L shape <b>L2</b> L shape each end	- Bare cable anti-wick device [Std] <b>M</b> Male IP68 Connector <b>F</b> Female IP68 Connector	<b>A</b> AFPC80S01-ST <b>B</b> AF80008 <b>C</b> AFPC80S02-T	- 0-10V Dim [Std] <b>DMX1</b> DMX 1 Ch <b>DMX4</b> DMX RGBW <b>TUN</b> Tunable White

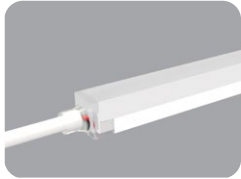
1. Specify length of run

2. Max run length per power entry feed is 32.8' [10m], 65.61' [20m] for 2 x feeds [one at each end]

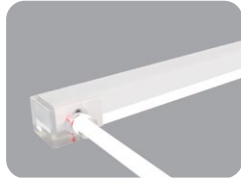
3. B2, EP2, L2 & S2 only required if exceeding the maximum single power entry feed as indicated above

# AKWAVFLEX-80

## INJECTION MOLDED CONNECTORS [IP68]



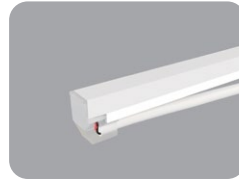
Power Entry - End



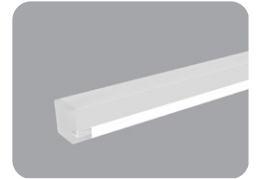
Power Entry - Side



Power Entry - Back

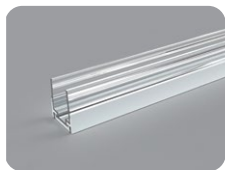


Power Entry - L Shape

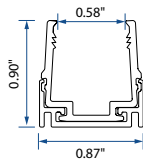


End Plate

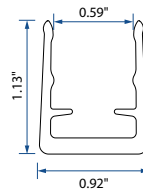
## MOUNTING OPTIONS



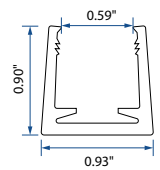
A - AFPC80S01-ST



B - AF80008

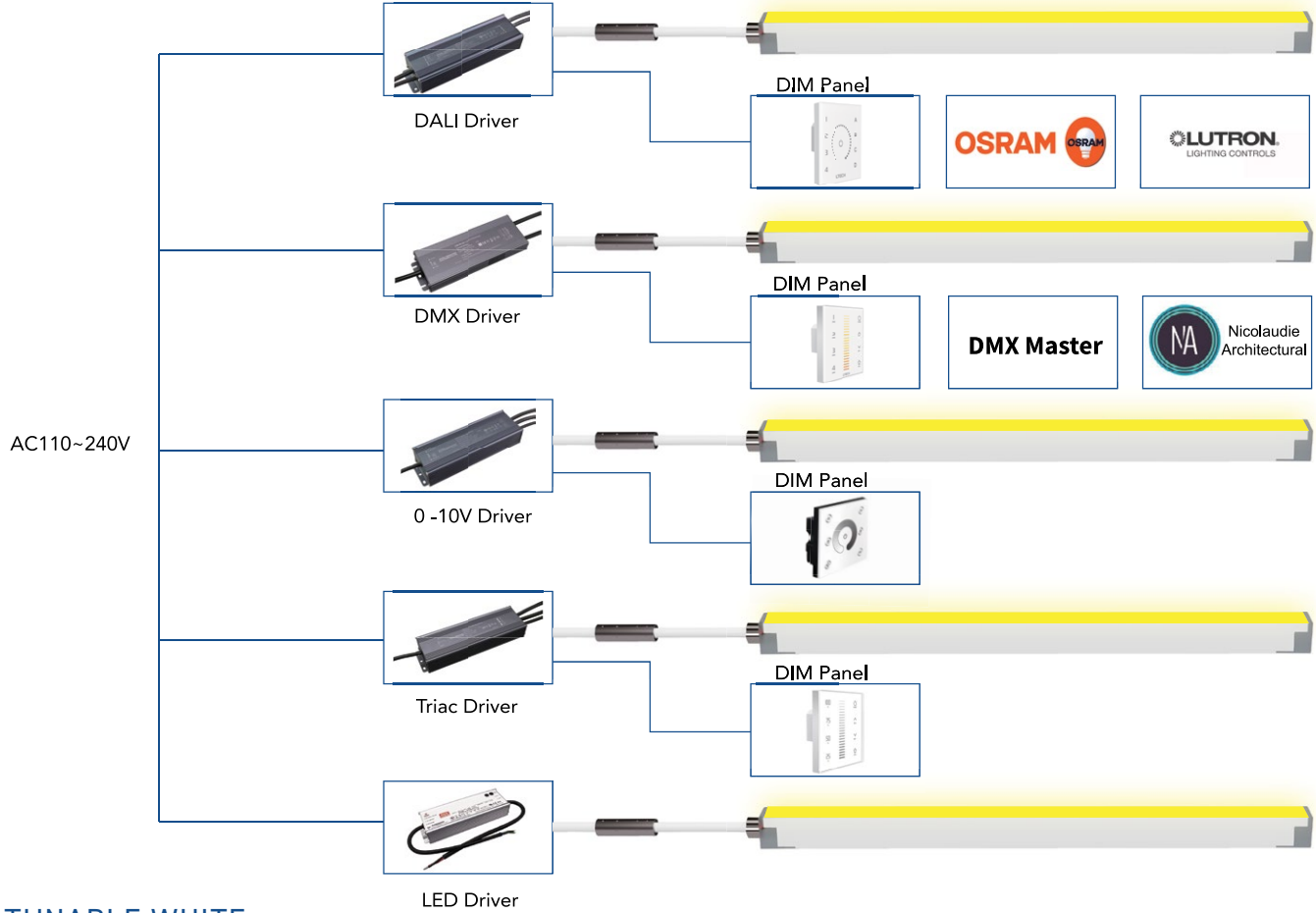


C - AFPC80S02-T

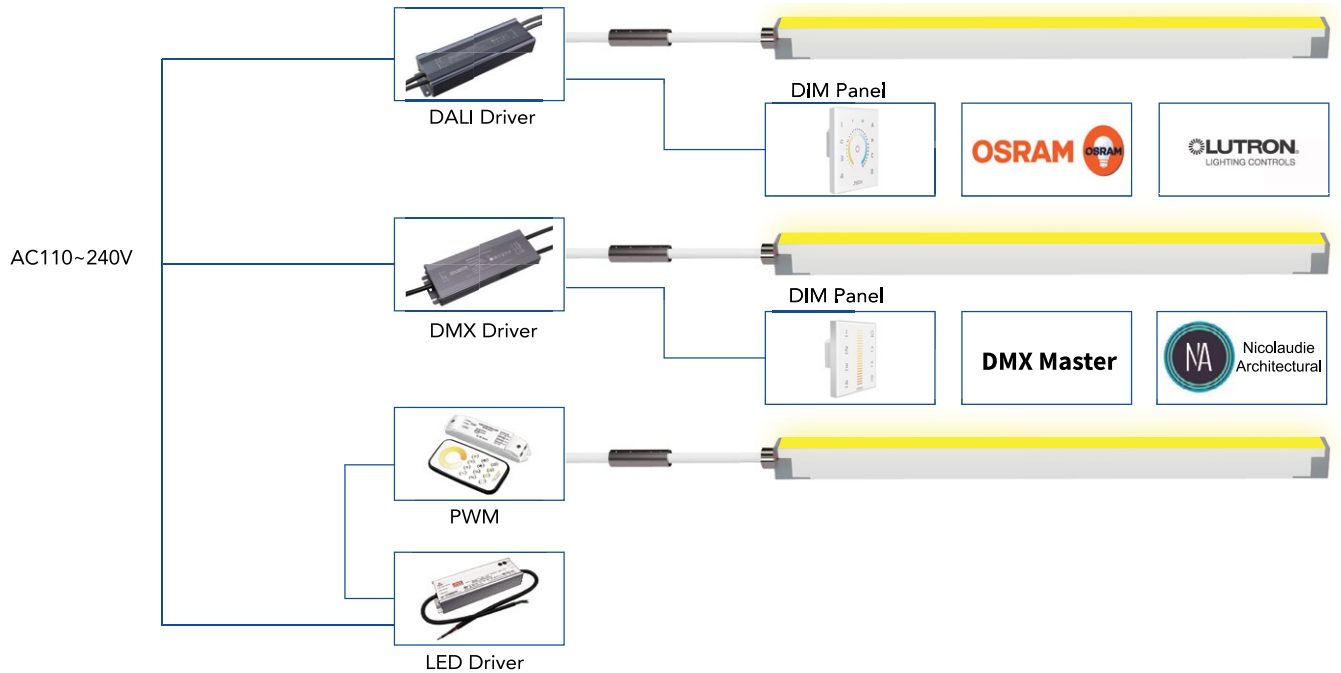


# AKWAVFLEX-80 WIRING DIAGRAMS

## MONO COLOR

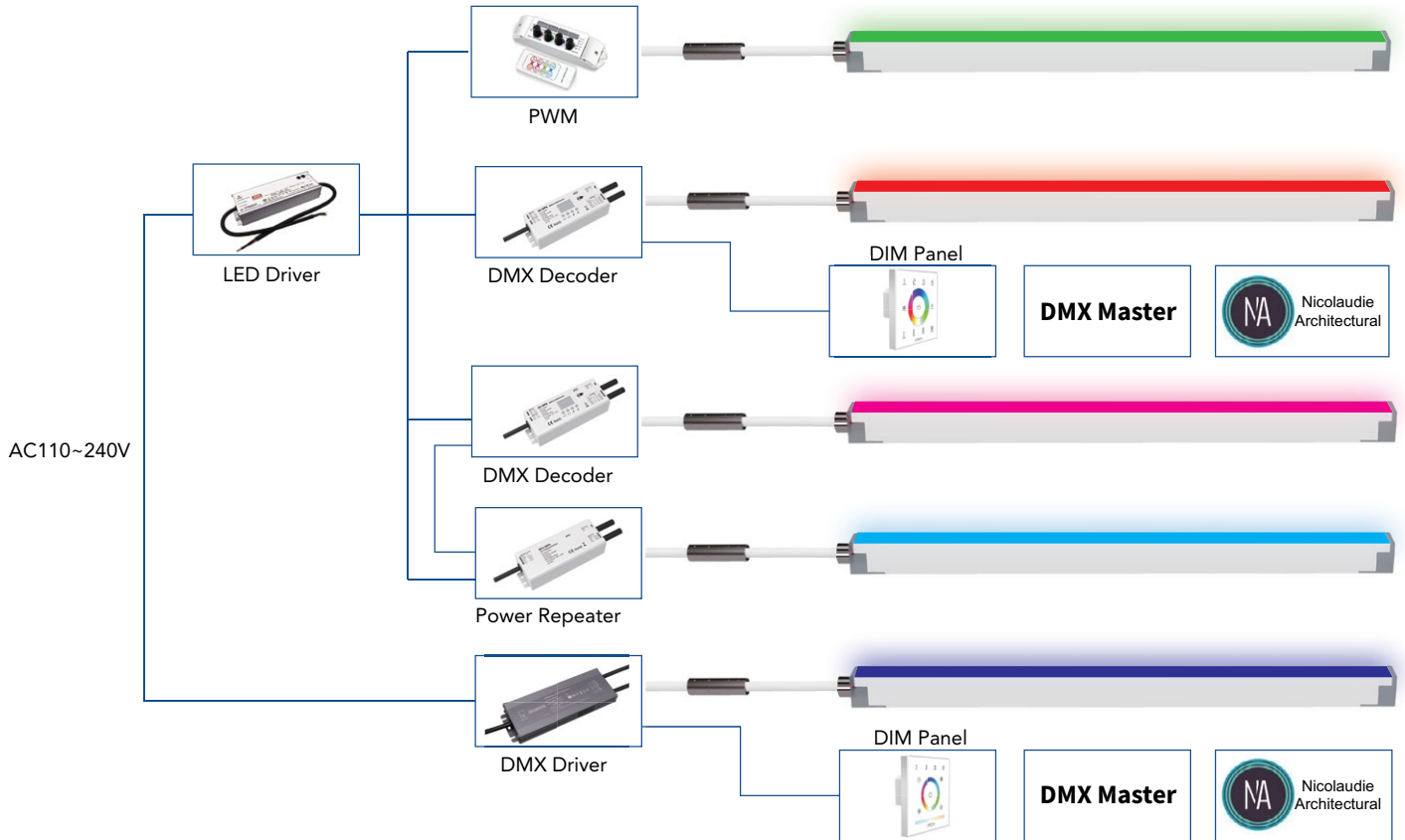


## TUNABLE WHITE



# AKWAV FLEX-80 WIRING DIAGRAMS

## RGBW [3K]



## DMX DYNAMIC

