

AKWAWGFLEX-01

WALL GRAZER

SPECIFICATION SHEET

Project Name:

Specifier:

Location:

Product Code:



Material:
Silicon



Impact Rating:
IK06



Weatherproof Rating:
IP68
Wet Location
Submersible [3.0ft]



Operating Temp:
-40°F – 131°F



Bending Direction:
Vertical & Horizontal



UL Listed



Beam Angle:
lensed



Dimmable:
0-10V, DMX



Bend Radius:
Horizontal >9.84"
Vertical >15.75"

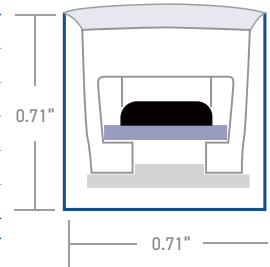


CRI:
>80+



DIRECT	AKWA Silicone Encapsulated Wall Grazer Vertical and Horizontal Bend
Input Voltage	24V
Power Consumption	5.48W/ft
Standard CRI	>80
LEDs per foot/m	7 24
Incremental length in/mm	9.83" 250mm

Optics	Lumen Output [lm/ft] *based on 3000K
15°	248lm
20°	318lm
25°	307lm
38°	335lm
60°	350lm
20°x40°	230lm



Other LED Options	static colours, tunable white
Control	0-10V
Optics	15° · 20° · 25° · 38° · 60° · 20°x40°
Finish	white
Mounting	surface
Accessories	mounting channel / profile

Due to tolerances of the production process and the electrical components, values for light output, colour temperature and electrical power can vary up to 10%.
PVC available for swimming pools [salt & chlorine].

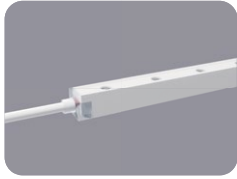
How to specify KLIK USA AKWA WG Flex 01. [Example of specification: AFWG0130K38S XX.X BA](#)

Fixture Type	Color Temp [K]	Optical Lenses	Mounting	Nominal Length [feet] with one feed ^{1,2}	Power Entry Location ³	Nominal Power Entry Termination	Mounting Profiles & Brackets	Control
AFWG01	27K 2700K 30K 3000K 35K 3500K 40K 4000K R Red G Green B Blue TUN 2700-6000K	15 15° 20 20° 25 25° 38 38° 60 60° 2040 20°x40°	S Surface	XX.X Specify run Length [ft]	B Back one end B2 Back each end EP End Plate one end EP2 End Plate each end	- Bare cable anti-wick device [Std] M Male IP68 Connector F Female IP68 Connector	A AFWG01H01 B AFWG01H02 C AFWG01H01FLX	- 0-10V Dim [Std] TUN Tunable White DMX1 DMX 1 Ch

1. Specify length of run
2. Max run length per power entry feed is 16.4' [5m], 32.8' [10m] for 2 x feeds [one at each end]
3. B2 & EP2 only required if exceeding the maximum single power entry feed as indicated above

AKWAWGFLEX-01

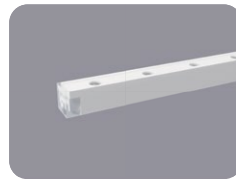
POWER ENTRY LOCATIONS



Power Entry - End

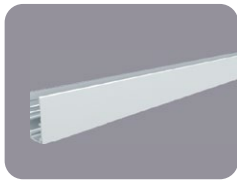


Power Entry - Back

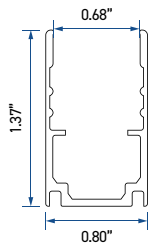


End Plate

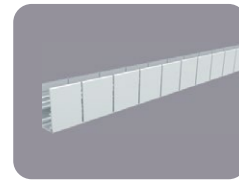
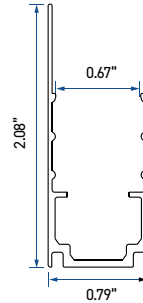
MOUNTING OPTIONS



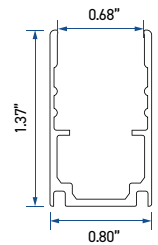
A - AFWG01H01



B - AFWG01H02
[with glare shield]

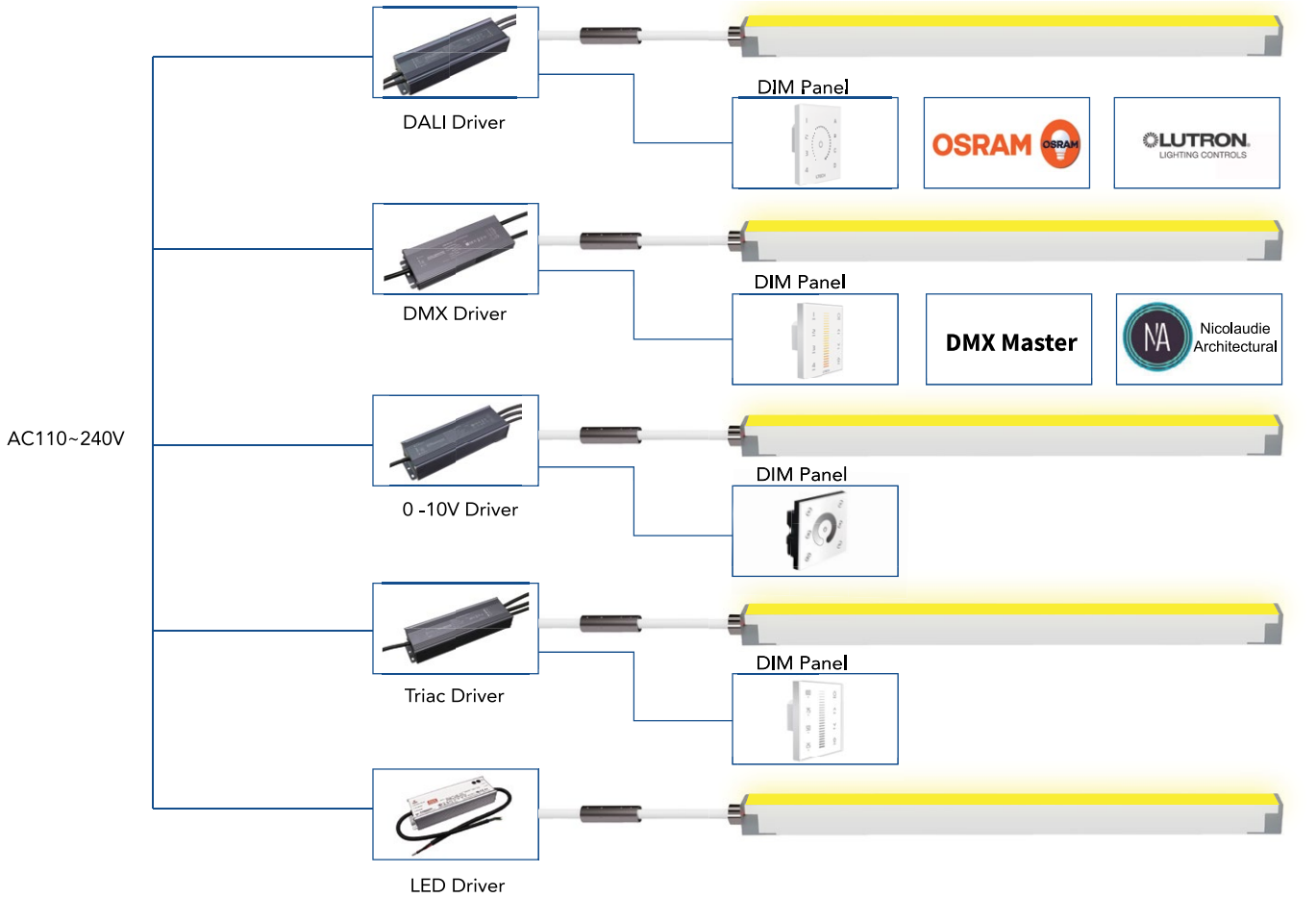


C - AFWG01H01FLX



AKWAVG FLEX-01 WIRING DIAGRAMS

MONO COLOR



TUNABLE WHITE

