

Project Name:

Location:

Specifier:

Rep Agency:

Fixture Type:

Product Code:

# KLIK LEDpod™ 40SQ Patented

## Description

Discrete, seamless point source LED fixture for use in all code-compliant handrail, especially curving ramps and helical stairs as well as long runs on bridges and pedestrian paths. Asymmetric optic allows mounting at rail nadir, eliminating uncomfortable glare issues.

## Housing

Clear anodized aluminum body as standard. Color-match anodized or bronze body as options, consult factory.

Aluminum body has a fine 25-micron finish and is then hard-coat anodized, thus preventing galvanic corrosion. Silicone gasket seals the installation from water ingress and provides added means of electrical isolation to minimize potential for galvanic reaction.

## Mounting

Patented attachment method offers unparalleled security and ease of mounting. Requires only a simple drilled hole in railing material, eliminates threading, gluing or exposed fasteners common among other handrail fixtures. All conductors remain internal to railing to provide secure and safe wiring. Tamperproof option available for extreme environments; consult factory.

- Tube Size: SHS 1.5", Max Wall 0.125"
- Cut Out: 25mm
- Weight: 0.16 LBS

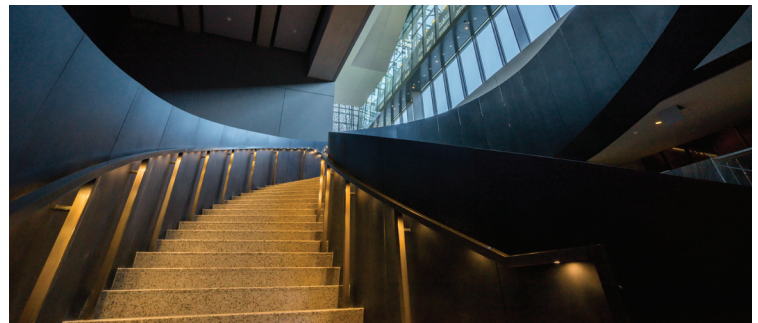
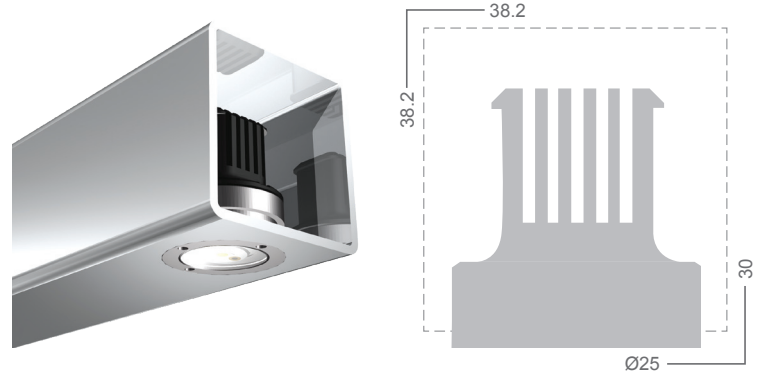
## Electrical/LED Driver

- Input Voltage: 24 VDC
- Operating Temp: -40 to 120° F
- Efficiency: 88 lm/W
- Driver: Must use class 2 driver
  - Primary Driver: 110 - 277 VAC UL Listed Constant Voltage
  - Secondary Driver: 350 - 500mA Constant Current (provided with fixture)
- Control: DALI, 0-10V, DMX
  - DMX control for dimming only, not for individually addressed LEDpod
- Enclosure: Minimum NEMA2 for indoor, NEMA3R for outdoor
- Wire connectors provided; factory pre-wire available, consult factory

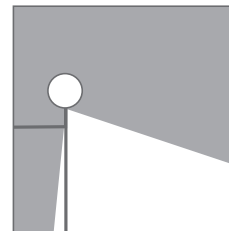
\*Please note, all KLIK fixtures are now dimmable as standard  
 \*Must purchase Driver and Enclosure through KLIK to hold warranty

## Listings

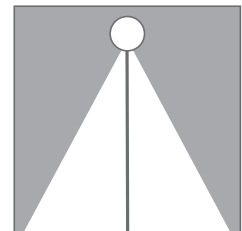
- ETL listed, UL 1598/CSA 22.2; CE
- cETL
- IP65 rated *All IP rated luminaires tested to AS60529-2004 Degrees of protection provided by enclosures (IP Code)*
- IK08 Impact Resistance
- Wet location rated
- International Dark Sky Association Certified *(Color temperature must be Amber or less than 3000K)*



Monumental Staircase - National Museum of African American History & Culture, Photo: Jason A. Flakes/Normoi Design



Asymmetric



Symmetric



## Product Codes

Follow the steps to specify your fixture. Enter Product Code in field at top of page. Example: LPSQ27KA12

Fixture Type	Rail Size <sup>1</sup>	Color <sup>2</sup>	Distribution	Rail Wall Thickness	Lens Option	Custom Bezel <sup>3</sup>
LP LEDpod	SQ 1.50" x 1.50"	27K 2700K 30K 3000K 35K 3500K 40K 4000K AMB Amber	A Asymmetric S Symmetric	12 .120" Wall	Clear lens standard  Add <b>FRS</b> for frosted diffused lens  Add <b>OTK</b> for Optek-film diffused lens	ANO Rose Gold Antique Brass Dark Antique Bronze Black Anodized

1. Bronze material requires a special clip, contact factory for more information.

2. Also available in blue (BLU), green (GRN), red (RED), and custom color temperature (as special order).

3. *Additional charges and lead time apply for this feature.*

5. Tamper proof option offers additional protection in extreme environments. *Additional charges and lead time apply for this feature.* To specify; add "TP" to product code.

6. To Specify 1.5 Watt; add "0350" to product code.

Project Name:	Location:
Specifier:	Rep Agency:
Fixture Type:	Product Code:

## LED Performance

LED: Cree XT-E  
CCT: 2700, 3000, 4000 (others available)  
CRI: 80-85  
Life: 80% at 50k hrs and 85° C  
Binning: 3 MacAdam Steps  
Warranty: 5 Year Warranty

## Lumens/Fixture or Pod

STANDARD		SPECIAL ORDER	
2W/POD Transparent		1.5W/POD Transparent*	
3000K	145	3000K	107
4000K	154	4000K	114
5000K	176	5000K	130

\*Contact factory for 1.5W POD

Optics				Reflector	
Beam Angle				Symmetrical	Asymmetrical
LOR defined by optics				76	74
lm	W	mA	V	System Lumens @4000K	
120	1.4	350	3	92	89
162	1.9	500	3	124	120

## Remote Mounting Distance Chart

24 VDC 100W Driver	Approximate Distance From Driver to First LED at 32 Fixtures			
Wire Size	10 AWG	12 AWG	14 AWG	16 AWG
Distance	525'	328'	213'	131'

Calculations based on 2' centers between pods.  
Increased spacing reduces number of pods per circuit.

## Primary Driver

Primary Driver	Secondary LED Driver	Spacing	Maximum KLIK LEDpods™ *
110 - 277 Primary Voltage Remotely Mounted Dimming Control 10" x 1.5" x 2"	500mA	24"	37
	350mA	24"	50

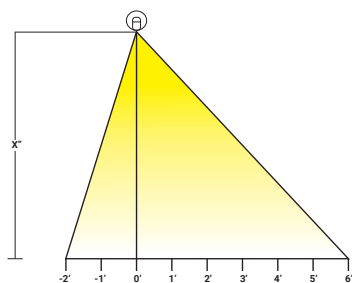
\*Based on 16 AWG between LEDpods

## Required Accessories

LP096WPRITRNDIM Class 2 IP67 driver, 110-277VAC to 24VDC constant voltage, 0-10 Dim  
LP100WPRITRNDIM Class 2 Driver, Dimming, Input voltage = 120-277 VAC, Output voltage = 24 VDC, 5 year warranty  
LPNEMA2ENCL NEMA2 INDOOR enclosure for LP100WPRITRNDIM, 12" x 3.3" x 2"  
LPNEMA3RENCLJR NEMA 3R Drip Proof Enclosure, 4 x 4 x 12 (IP32 Equivalent)  
LPNEMA4ENCLJR NEMA4 Watertight Enclosure, 6 x 4 x 12 (IP66 Equivalent); NEMA4X  
LPNEMA6PENCL Available NEMA 6P Submersible Enclosure 15" x 8" x 6" (IP67 Equivalent)

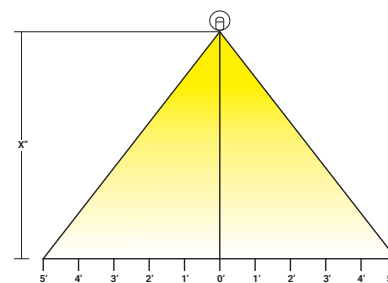
Additional driver & enclosure configurations. Please note the KLIK UL Listing requires purchase of a remote driver and enclosure.

## KLIK LEDpod™ Footcandle Chart



Asymmetric

X = Rail Height (34" Tall Handrail or 42" Tall Guardrail)  
Optic Height: 34" - 1.57" (Handrail Diameter) = 32.43" (2.7')  
42" - 1.57" (Handrail Diameter) = 40.43" (3.37')



Symmetric

			2'	1'	0	1'	2'	3'	4'	5'	6'	7'
1.5 Watt	KLIK LEDpod™ 40SQ 350mA Asymmetric	34" Tall Handrail	0.39	0.96	4.09	5.09	3.63	2.64	1.27	0.58	0.24	0.08
		42" Tall Handrail	0.36	0.86	2.63	3.29	2.73	2.03	1.47	0.81	0.43	0.22
	KLIK LEDpod™ 40SQ 350mA Symmetric	34" Tall Handrail	2.74	5.22	6.00	5.22	2.74	0.91	0.15	0.05	0.02	0.01
		42" Tall Handrail	2.16	3.62	3.85	3.62	2.16	1.35	0.38	0.10	0.04	0.02
2 Watt	KLIK LEDpod™ 40SQ 500mA Asymmetric	34" Tall Handrail	0.53	1.29	5.53	6.87	4.90	3.57	1.72	0.78	0.33	0.11
		42" Tall Handrail	0.48	1.17	3.55	4.44	3.68	2.75	1.98	1.10	0.58	0.30
	KLIK LEDpod™ 40SQ 500mA Symmetric	34" Tall Handrail	3.70	7.05	8.11	7.05	3.70	1.23	0.20	0.07	0.03	0.01
		42" Tall Handrail	2.92	4.90	5.20	4.90	2.92	1.83	0.52	0.13	0.05	0.02

Project Name:

Location:

Specifier:

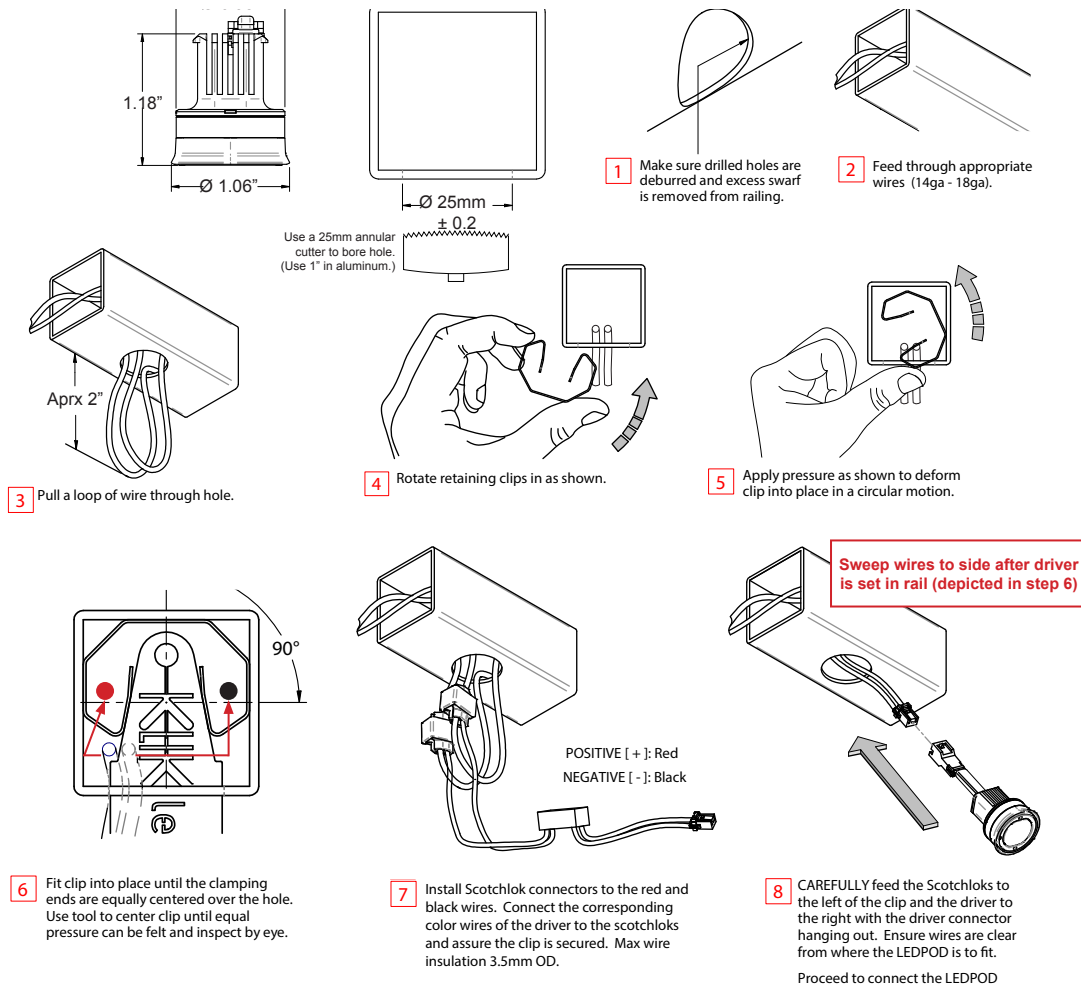
Rep Agency:

Fixture Type:

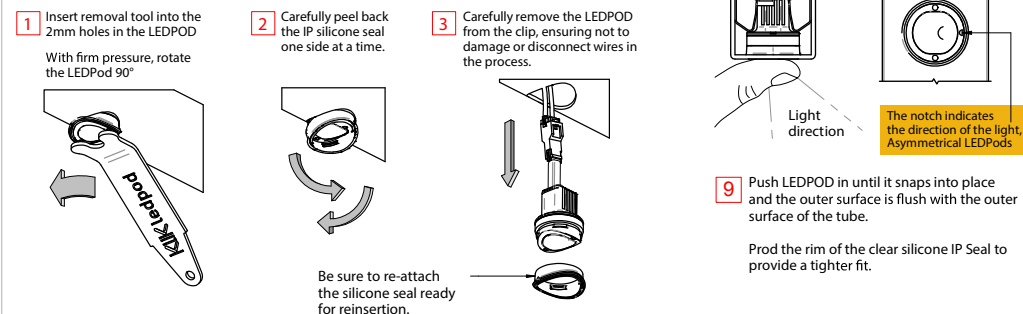
Product Code:

## Installation Instructions

Additional instructions may apply, consult factory.



### LEDPOD Removal Steps



Project Name:

Location:

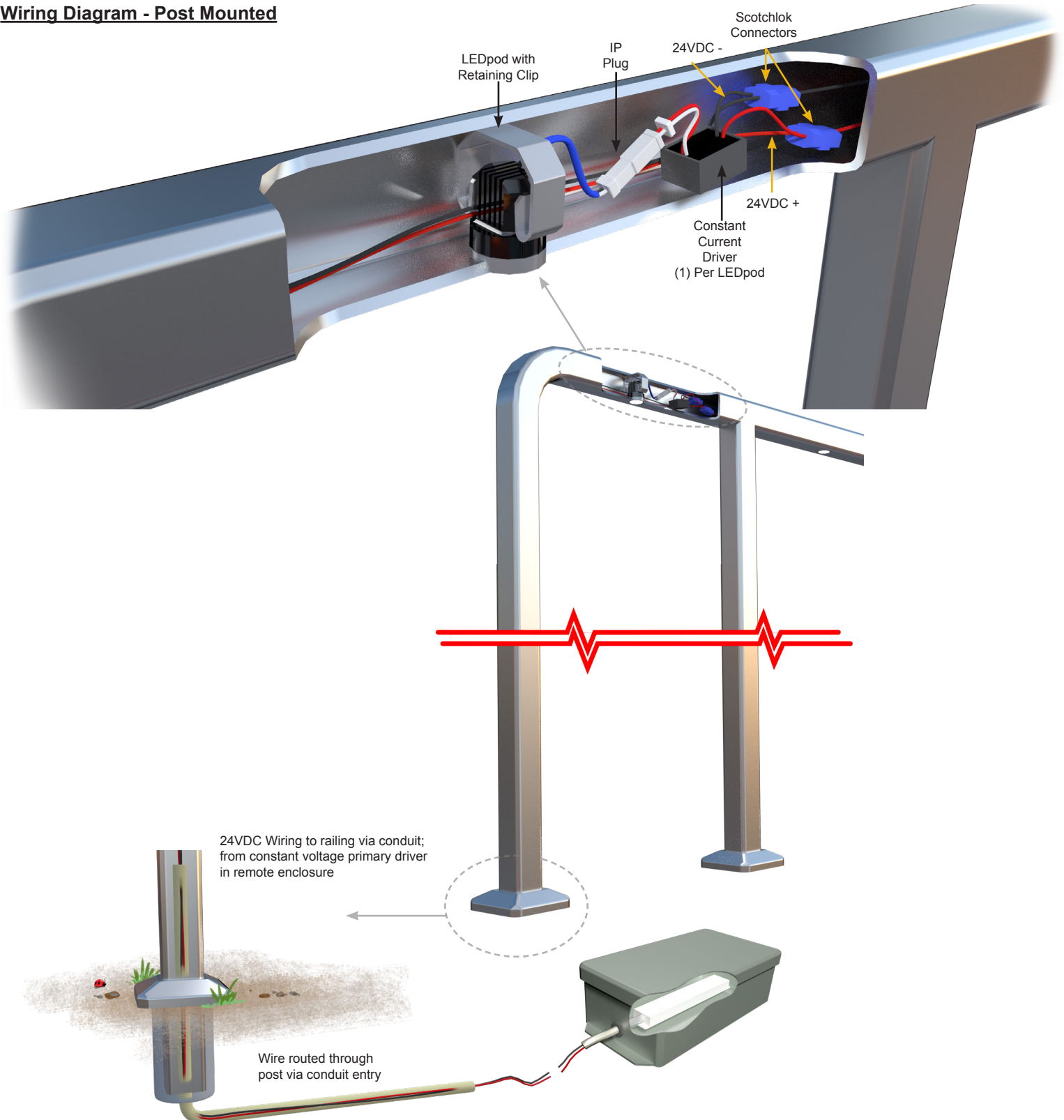
Specifier:

Rep Agency:

Fixture Type:

Product Code:

### Wiring Diagram - Post Mounted



Project Name:

Location:

Specifier:

Rep Agency:

Fixture Type:

Product Code:

### Wiring Diagram - Wall Mounted

