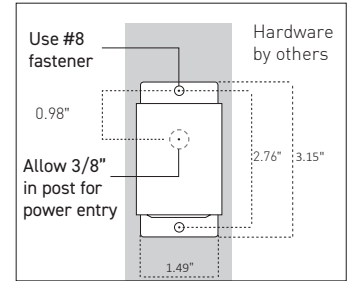
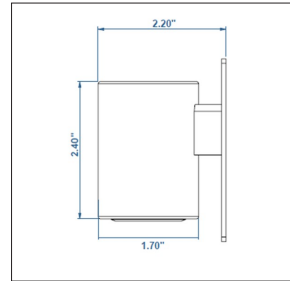


MISTIK 028 CYL SPEC SHEET



POST DIAMETER
Ø38 · Ø42 · Ø48

DIAMETER
Ø44



Optics			Reflector	
Beam Angle			symmetrical	asymmetrical
lm	W	mA	System Lumens ¹	
165	1.4	350	126	123
235	2	500	179	174
284	2.5	700	216	211
Colour			2200K · 2700K · 3000K · 4000K · 5000K · Red · Green · Blue · Amber · PC Amber	
CRI			80-85	
Binning			2 McAdam Step	
Fixture Driver			Output 350 - 700mA Constant Current (Provided with fixture based on selected wattage; Compatible with KLIK 24VDC power supply)	
Control			0-10V · DMX* · DALI	
Mounting			By others · 0.26in hole provided top and bottom for surface mounting	
Distribution			symmetric · asymetric · soft symmetric · soft asymmetric · frost symmetric · frost asymmetric	
Weight			0.1lbs	

* DMX control is for overall dimming only and not for individually addressed LEDpods
¹ Lumen output based on 4000K

MTK028KAPSD 20200904

Product Codes

Follow the steps to specify your fixture. Enter Product Code in field at top of page. Example: **MKCY22KA500FL**

Fixture Type	Color ¹	Distribution	Wattage	Lens ^{2,4}	Mounting	Custom Bezel ^{3,4,5}
MKCY	28K	A Asymmetric	350	-- Clear Flood (Standard) FR Frosted SF Light Filter	FL Flat Surface	DUL DULUX Colors (request color guide)
	27K		500		P38 1.5" OD post	RAL RAL #
	30K	S Symmetric	700		P42 1.66" OD post	
	35K				P48 1.90" OD post	
	40K					
	50K					
	AMB					
	PCA	Phosphor-Converted Amber				

- Other colors on request.
- Clear FLD (Flood lens standard; FRS is heavy opaque; SFT is light filter).
- Specify RAL# (additional charge)
- Additional charges and lead time apply for this feature.
- Colored anodized bezel available, contact factory

